

## BATCHMASTER® IV 200MM BAG COUNTER

*Do you need to count bags into master bags, totes, or boxes?*



Bag Counter Front View



Bag Counter Back View

The **Batchmaster® IV** bag counter is designed to fit under the bag discharge of your bagger. The integrated bag takeaway conveyor and counter conveys bags from your bagger into a bag processing counter that will drop the desired count of bags into a master bag, box, or tote. Bags, Boxes or Totes can be placed by an operator under the bag counter discharge, or they can be cycled automatically with a smart conveyor. A box erector and closer can be added for a fully automated box filling line.

**Batchmaster®** Bag counter is the only counter that utilizes **patented** dual view scanners that provide the highest accuracy count possible. Our scanners measure the volume of the bag as it falls. If 2 bags fall together the counter will see it and count the 2 bags as 2. If an empty bag or loose product that has fallen out of a poorly sealed bag falls through the scanner it will also be detected prior to entering a master bag, tote, or box. Our 2 gate Bag Processing Unit will ignore empty bags and unbagged loose products. Our 5 gate bag counter has 2 additional gates that can reject empty bags or unbagged loose product.

### **Batchmaster® IV Benefits:**

**Flexibility** - batch a wide variety shapes and sizes of product accurately with no changeover parts

**Versatility** - system integration to any type of packaging machine. Designed for short or long production runs

**Count Accuracy** – **patented** Dual View Scanner verifies the 3D volume of each bag in real time. Under and over size bags and product can be ignored, counted as 2 or rejected before entering the package

**Quick Changeover**— typical product changeover of 2 minutes or less. Recipe set ups can be saved on system or remote network. Bar code scanner can be added for quicker loading of saved recipes

**Cost Savings** – virtually no wear parts, servo motors with no linkages, decrease or eliminate product giveaway with this new patented precision filling technology

**Value** - increased output, 4-6 times faster than counting by hand with personal.

**VMAS Technology** - Verified Movement & Speed of all mechanical movements via a true closed loop system. Scanner also self-calibrates dust and light. Will fault and notify operator to clean if sensor is blocked or too dirty to scan accurately.

# BSI

## BATCHING SYSTEMS, INC.

### ENGINEERED AUTOMATED PACKAGING SOLUTIONS

*Applications: fasteners, bakery, snack, candy, confection, pet food, automotive, cannabis products, medical devices and products, nutraceutical, vitamin, dietary supplements, pharmaceutical, toy, sports, and crafts, bags, toiletries, food, dispensing scoops, and more*

**Power Requirements:**

120 VAC, 1 Phase, 60 Hz @ 15 Amps

**Air Requirements:**

No air or gate sensors are required. All movements controlled and verified with stepper motors

**Footprint:**

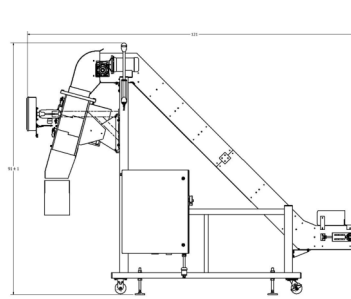
121"L x 44"W x 91" H

**Part Size Range:**

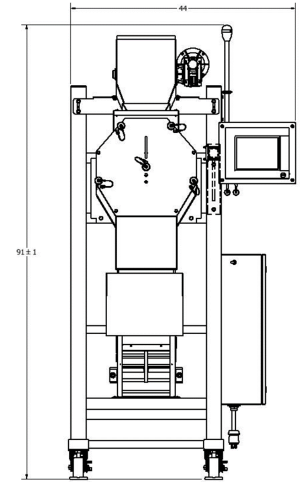
200mm PPU-Minimum thickness of 1"x1" up to 7"x7"x 10" long

**Feed Rate:**

Up to 400 linear inches of feed per minute



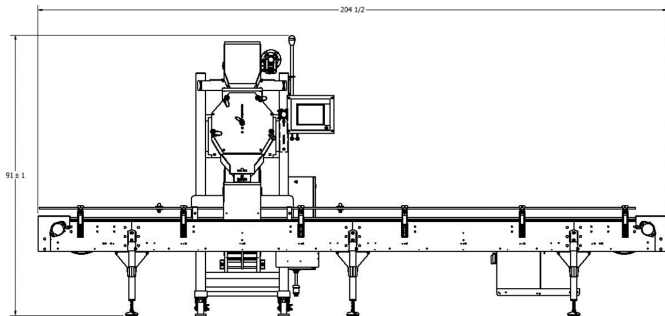
Machine Footprint side view



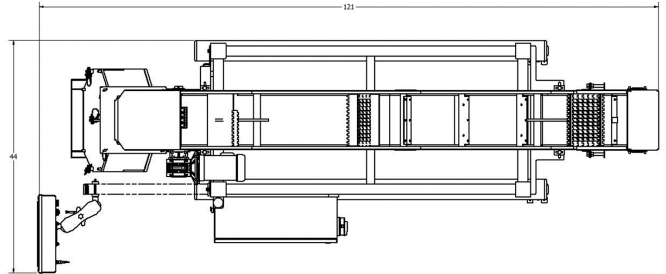
Bag Counter without Conveyor

**Batchmaster® IV Features:**

- Auto Gate Fault Re-Start
- Auto Set-Up
- Closed Loop Stepper Motor Driven Gates
- Continuous Run, See Through Operation
- Counts Bags from 1"x1" up to 7" X 7 X 10" long
- Custom Password Lock Outs
- Food Grade and Anti-Static Options
- High Resolution with 6,000 Scans per Second
- Improved Auto-Calibration and Dust Filtering
- Industrial Grade welded steel painted stand
- In-Flight Volume Analysis
- Large 10.4" Color Touch Screen HMI Controls
- Multi-Chamber Part Processor
- Multi-Language Options
- Multiple Dump Feature
- Out of Tolerance Batch Reject (On 5 Gate PPU)
- Partial Accumulation and Split Counts
- Patented** Dual View Scanner with Part Validation
- Real Time Operational Data
- Run at up to 120 Bags per minute.
- Self-Diagnostics with Remote Capability
- Semi-Automatic or Integrates to Fill any Type of Package
- State Of the Art High Speed Electronics
- Storable Set-Up Parameters of 500 Recipes
- Tool-Less Assembly / Disassembly
- UL, cUL, & CE Approved Options
- User Friendly Intuitive Touch Screen controls
- Works with virtually any brand or type of bagger
- Verified Motion Control Technology



Machine Footprint front view



Machine Footprint top view